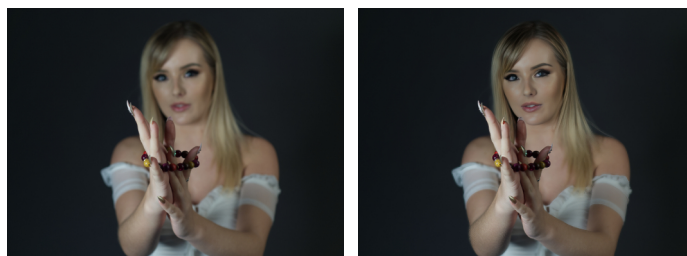


Macro (a closer look at the past week)

Last Wednesday we covered a few different - yet interlinked topics.

At request of members at AGM we included a review of images from previous SPA/Regnum Crouch judged events as a precursor to selecting CCC candidate images for these external competitions. Images can be found on websites at [RC Comps](#), [SPA Comps](#) (sidebar), [SPA Exhibition Awards](#) (for download presentations).

As part of a series of occasional discussions on key features and use of photo editing software - we saw an awareness demo of Topaz Photo AI (it gets a lot of mentions in Club meetings around enhancing images). Here is an extreme example - using an image that had intended depth of field blur when taken - and showing how Topaz "corrected" the images (this is an example - it would not normally be used in this way for Club images).



Topaz can introduce artefacts and distortion into the image and it would usually be used much more discreetly to add extra crispness so needs to be used with care.

A question was raised [about halos \(what are they\)](#). Here is a deliberate example created by over-sharpening a jpeg file. You can see a white line around the helicopter - judges spot them from 50m. Other post-processing filters also give halo effects - halos can be white or black, sharp (as here) or a diffuse halo around a subject. Learn to spot and avoid or correct.

Finally we showed and discussed a presentation prepared by the SPA on "AI in post-processing". You can download as a [powerpoint](#) (c112mb) or [pdf](#) (c12mb) from the Club's website (click links).

In particular it highlights the increasing trend for "AI" photo editing software to include generative-AI features which can add image content from the internet. Most club, regional, national and international organisations prohibit the use of generative-AI being used intentionally or accidentally in competition images so it's a current hot topic. It's a difficult area given noise around AI - but some key reminders are - DO NOT switch on generative-AI features if there are clearly marked buttons (!) - disconnect from the internet when post-processing to avoid downloading image content - check your image afterwards, if it looks like an enhancement to the original then maybe ok, if it looks materially different then maybe not. Remember organisers can ask to see original RAWs etc.

Wide-angle (the bigger picture) - website updated with [full programme](#) (click link) - being reviewed by Committee
Reminder that latest updates and reminders are sent via WhatsApp Notification Group.

We welcome new (returning) member Neville Britt.

PROGRAMME UPDATE - At request of Steve Y the Ext Comp Selection and Mix n Match selection evenings have been swapped - see updated diary below. Deadline on PhotoEntry for ext comp images has been extended to 21 Sept.

Note: PhotoEntry has now been updated to include upcoming monthly competitions and Club competitions.

Mid to Long Range Zoom (a look at what's coming up in the next few weeks)

(i) = organised by interest/learning group - watch out for email details from organiser(s)

Hut is available on unused Wednesdays for workshops/other meetings

- PRINT EXHIBITION at CRAWLEY MUSEUM - Thurs 21 Aug to Sat 11 Oct (Thurs/Fri/Sat opening times)
- **Wed 17 Sep - HUT - Review and initial selection of images for Mix n Match**
- **Wed 24 Sep - HUT - Review of Club candidate images for upcoming external competitions**
- **Mon 22 Sep 6pm - deadline for Monthly Comp images "the letter H" followed by online poll (PhotoEntry)**
- Wed 1 Oct - HUT - Monthly Set Subject Competition RESULTS AND REVIEW - subject is "H"
- New programme for 2025/26 being finalised by Committee

Useful Links

See us on [Facebook](#) (click link)

See us on [X \(was Twitter\)](#) (click link) and [Flickr](#) (click link)

Our [website](#) (click link) [crawleycameraclub.co.uk](#)

(currently redirects to [crawleycameraclub.co.uk](#) home page)

see also [crawley.photography](#)

Our [programme](#) (click link)

Previous [newsletters](#) (click link)

Reminder of useful email addresses

RECEIVE news and online event notifications from

news-crawleycamera@gaggle.email

SEND AND RECEIVE messages to/from all members

allmembers-crawleycamera@gaggle.email

SEND to admin/committee via Club

crawleycameraclub25@gmail.com