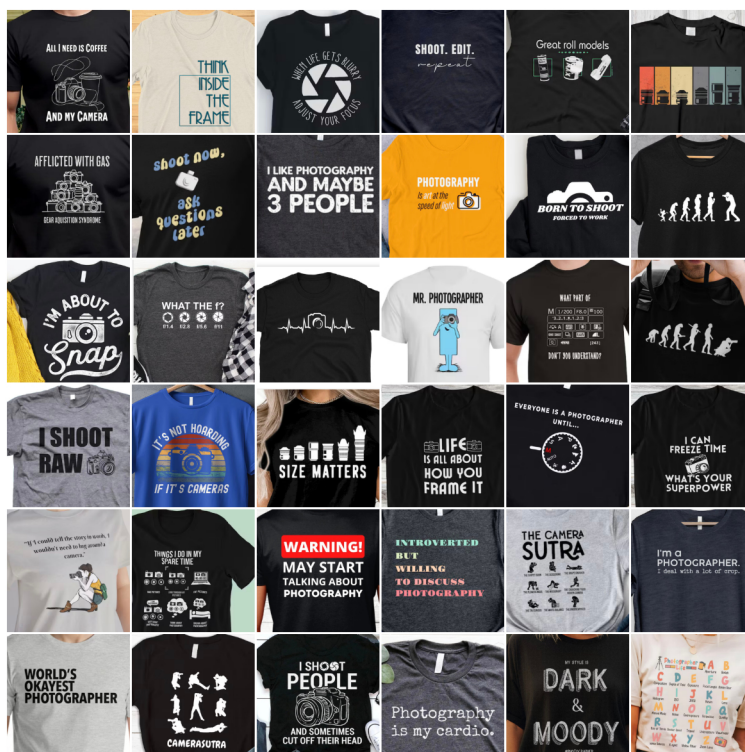


Macro (a closer look at the past week)

This week is Monthly Competition (the letter "P") voting and the online poll closes 6pm Sunday with results at the Hut next Wednesday. A reminder that if you arrive at the Hut after 7.45pm-ish on Club evenings then the usual door is likely to be locked when the meeting starts (as we cannot control access) and you should come around to the double doors (fire exit) and make some noise so we can let you in. Maybe we should consider a door bell.

As it's now officially Spring then maybe time to update your wardrobe. There are plenty of photography themed tee-shirts available online. In an [INFORMAL CLUB POLL](#) (click link) select your top ten favourite designs from this random sample of 36 from Etsy.com. Poll closes midnight on Thursday and Club favourites revealed next time. Kudos if you already have one and wear it Wednesday. (Other tee-shirt designs, suppliers and online stores are available.)



Wide-angle (the bigger picture) - website updated with [full programme](#) (click link)

We have had a positive response to re-introducing photographer categories for next season's PDI/Print Competitions and will provide further update soon.

Welcome to Sean McCarthy who visited for the recent Print competition evening and has now joined.

Sensor Spot - an occasional item on some "technical" aspect of photography - for those that may be interested. Thanks to Paul H who highlighted (in a recent Hut meeting) using the "high-pass filter" as an image sharpening tool in post-processing (maybe found as a sharpen filter option in editing software). Apply the filter on an image layer and select overlay blend mode (or similar). Without the blend mode you see a grey image with edges selected (it's grey so as to have +ive and -ive edge contrast). The blend mode then combines the layers which has the effect of sharpening edges rather than the whole image (ie ignoring blemishes etc in smooth tonal areas). Some editing tools combine high-pass + blend in an "unsharp mask" sharpening option. The following online articles provide some more info using Photoshop as a reference tool (but has wider applicability) else otherwise search "high-pass filter in photography". [Article 1](#). [Article 2](#). (click links)

Mid to Long Range Zoom (a look at what's coming up in the next few weeks)

(i) = organised by interest/learning group - watch out for email details from organiser(s)

Hut is available on unused Wednesdays for workshops/other meetings

- [Wed 26 Mar - HUT - Monthly Set Subject Competition RESULTS AND REVIEW](#) - subject is "P"
- [Wed 2 Apr 6pm - deadline for receipt of PDI Comp Round 2 images - see email nearer time](#)
- Wed 2 Apr - ZOOM TALK - "Waterscapes" with Jonathan Genevaux
- Wed 9 Apr - HUT - PDI Competition Round 2 with guest judge Gerald Kitiyakara
- Wed 16 Apr - HUT - Competition Gallery - another look at all the recent PRINT and PDI competition images
- Easter
- [Mon 21 Apr 6pm - deadline for receipt of Monthly Comp images "the letter A" followed by online poll](#)
- Wed 30 Apr - HUT - Monthly Set Subject Competition RESULTS AND REVIEW - subject is "A"

Useful Links

See us on [Facebook](#) (click link)
See us on [X \(was Twitter\)](#) (click link) and [Flickr](#) (click link)
Our [website](#) (click link) [crawleycameraclub.co.uk](#)
(currently redirects to [crawleycameraclub.co.uk](#) home page)
see also [crawley.photography](#)
Our [programme](#) (click link)
Previous [newsletters](#) (click link)

Reminder of useful email addresses

RECEIVE news and online event notifications from
news-crawleycamera@gaggle.email
SEND AND RECEIVE messages to/from all members
allmembers-crawleycamera@gaggle.email
SEND to admin/committee via Club Sec
crawleycamera@gmail.com
SEND images when requested (eg competitions)
crawleycameraonline@gmail.com